

WRF_EMS Output

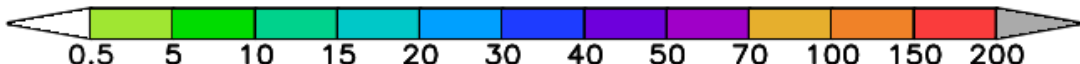
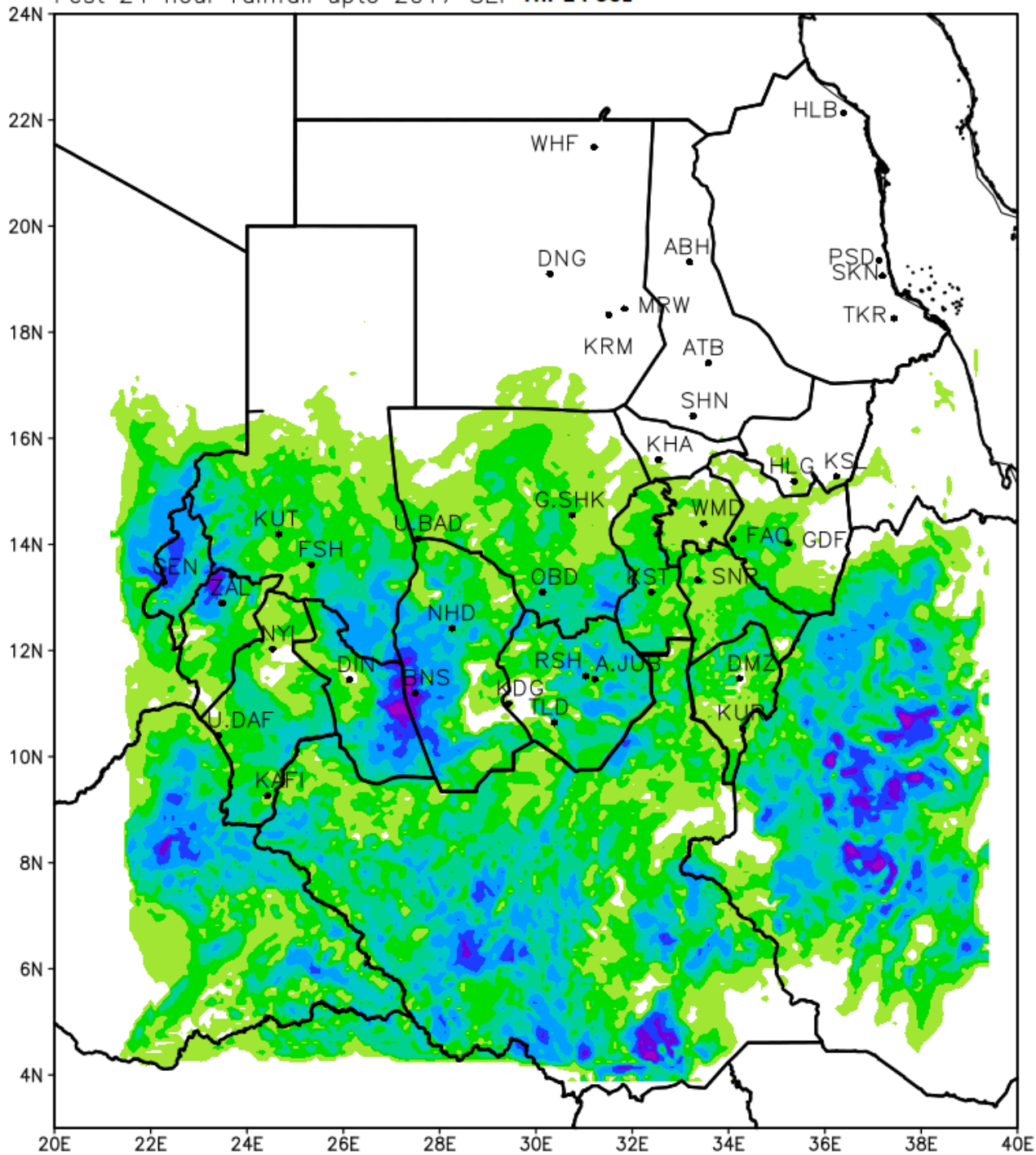
Rainfall Amount

Forecast

(13 - 15) Sep 2017

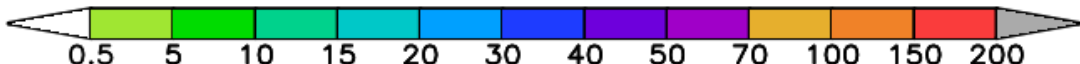
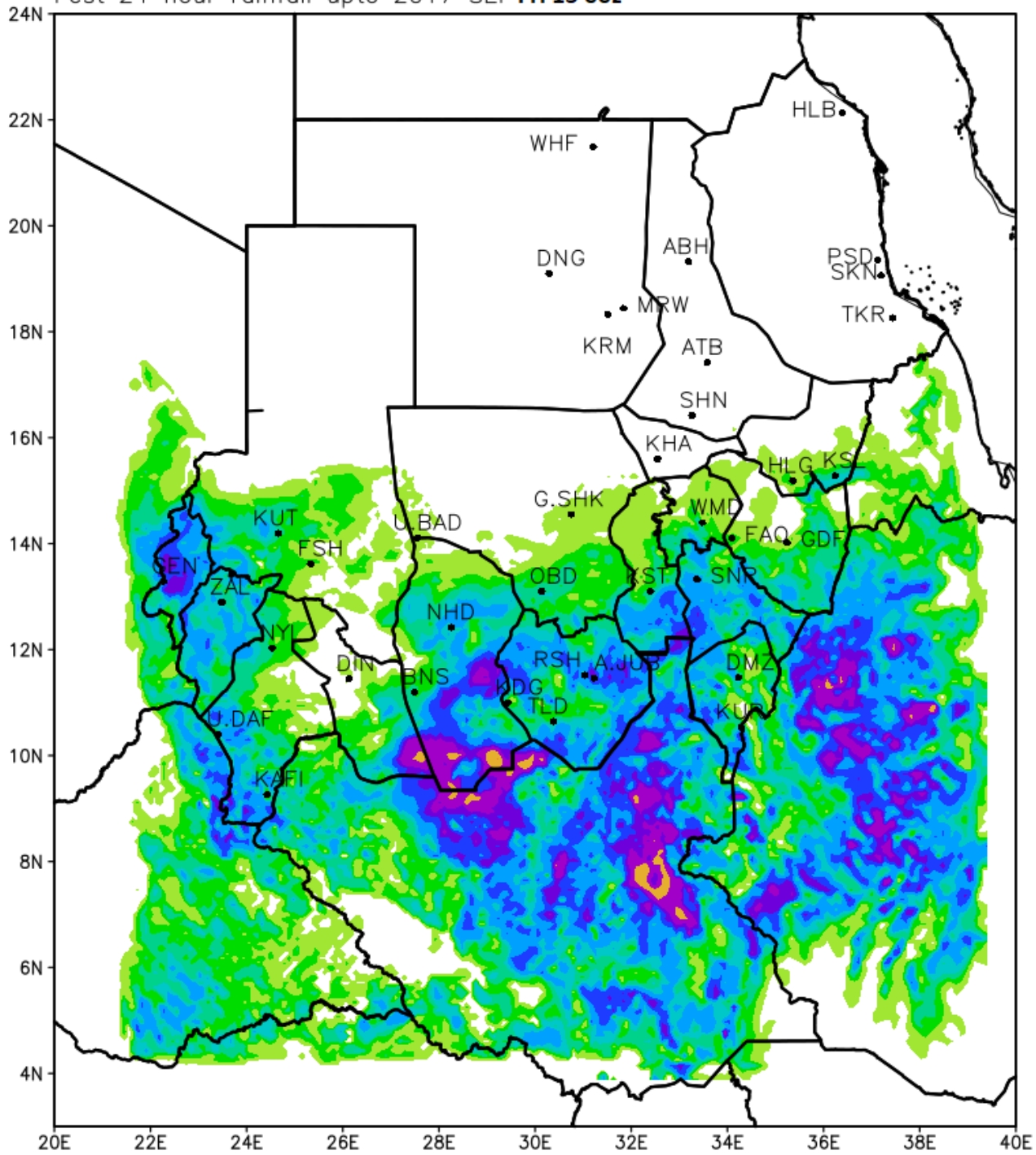
Int 2017 SEP Tue 12 00z

Fcst 24 hour rainfall upto 2017 SEP **Thr 14 00z**



Int 2017 SEP Tue 12 00z

Fcst 24 hour rainfall upto 2017 SEP Fri 15 00z



Int 2017 SEP Tue 12 00z

Fcst 24 hour rainfall upto 2017 SEP Sat 16 00z

